

ASSEMBLY INSTRUCTIONS FOR DL800SQ

May 2017

The DL800SQ is a frameless counter-top glass cabinet with double hinged doors, adjustable shelves and built-in lights.

The box contains all the parts necessary for its assembly including tools.

ASSEMBLY

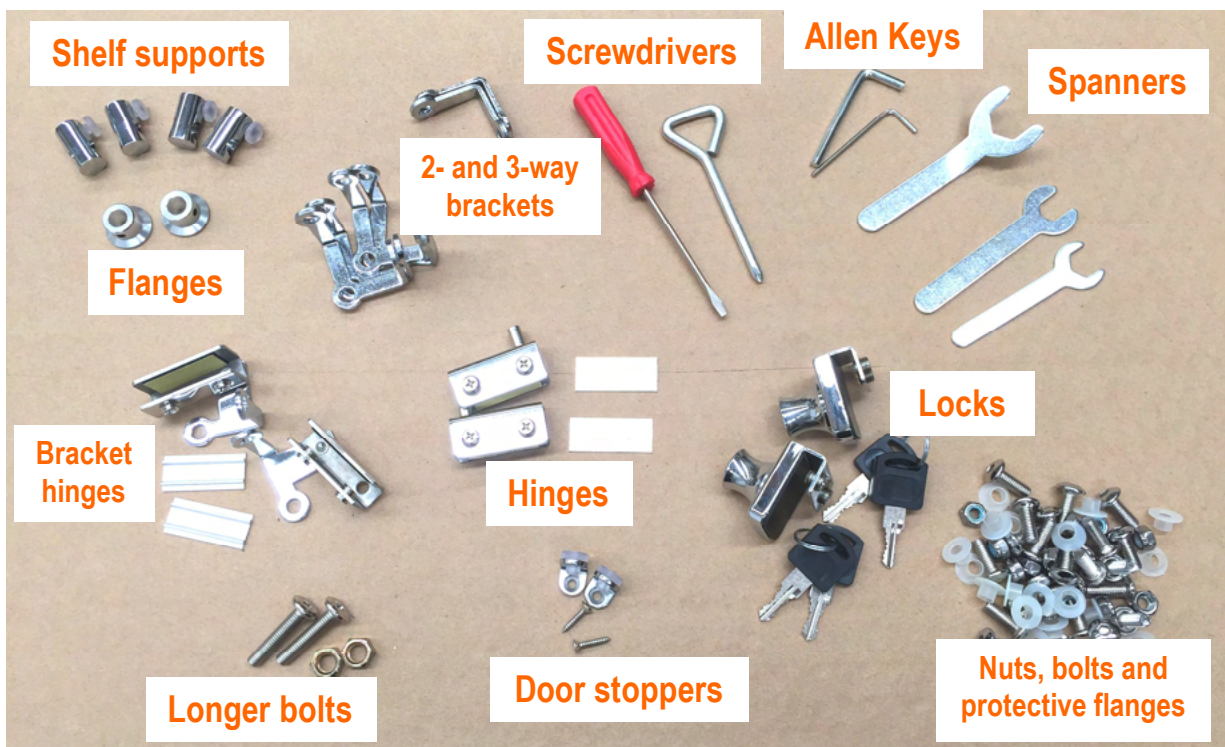
Assembly of the DL800SQ is by way of poles, brackets, screws (nuts) and bolts.

In the main, the cabinet should be assembled upright rather than lying down.

One person can assemble the cabinet, but it can be helpful to have a second person for various tasks.

It is easier to clean the glass before, or at least during, assembly.

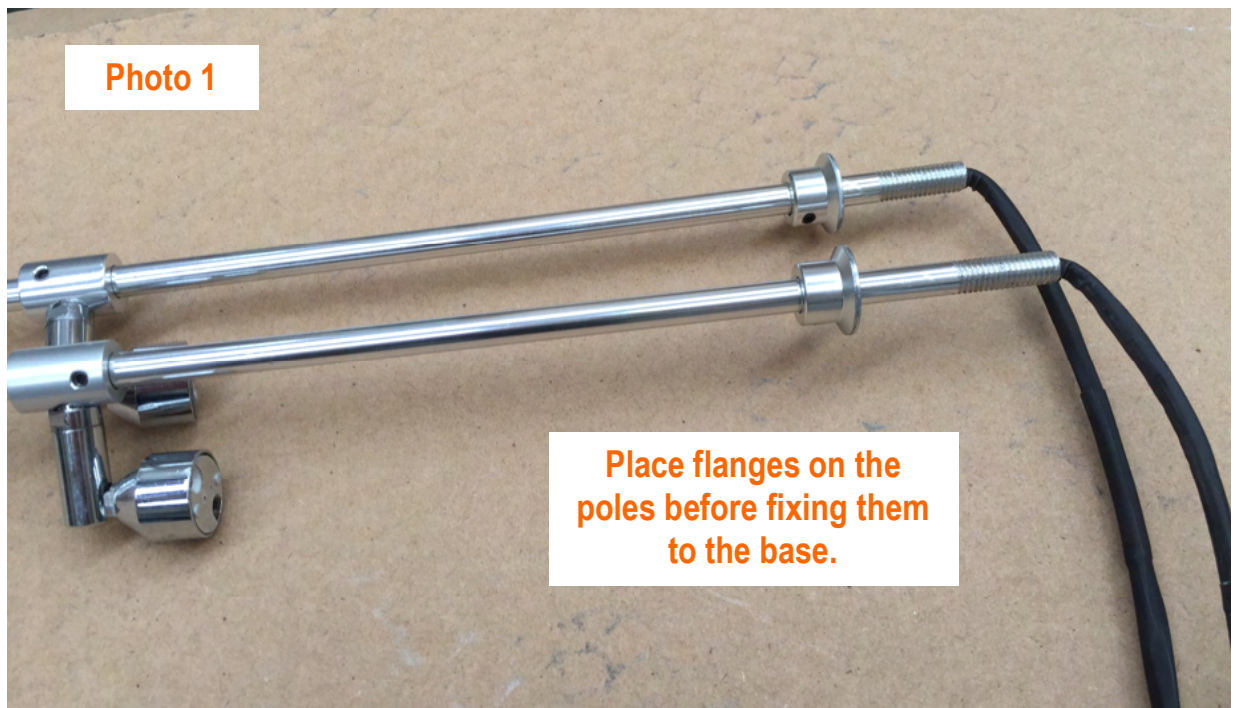
Occasionally, the parts diagram may differ from the contents of the box. Design improvements mean that your cabinet may differ in certain respects from what is described in these instructions.



SHOWCASESDIRECT
design strength value

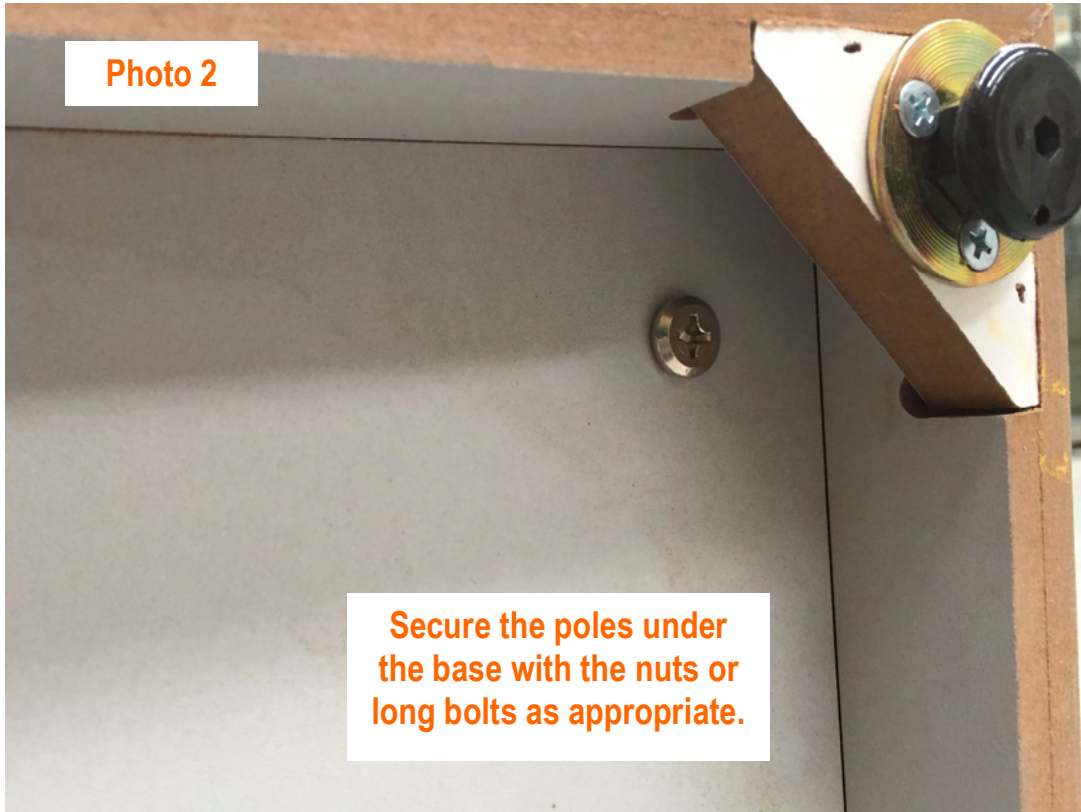
Ph: 027 2937193
Fax: (09) 6290900
Email: info@showcasesdirect.co.nz
www.showcasesdirect.co.nz

1. After unpacking the boxes, place the wooden base on the ground.
2. The cabinet is mainly held together by the four poles supplied. In combination with the glass sides and the brackets, these poles give the cabinet structural integrity. They also support the shelves, and two of the four poles hold the lights.
3. A total of four poles have been supplied. Two of these four poles are plain, i.e. they have no light fittings on them, while the other two have light fittings attached and wires coming from the base of them.
4. Install the poles first. The poles should be inserted through the holes in the base, and secured with either the long screws or bolts supplied, as appropriate. Remember to use a washer. See Photos 2 and 3.
5. The poles with light fittings go at the front of the cabinet, nearest to the wiring under the base. The wires from the two light poles can be secured into the connector blocks under the base using the small red screwdriver supplied. Before doing so, however, ensure a flange (collar) is placed on the pole, as shown in Photo 1.
6. The rear poles are fixed to the base with the longer bolt. Place a 3-way bracket under each rear pole and fix it in place with the long bolt, as shown in Figure 5.
7. The wiring required is shown in Photo 4.



SHOWCASESDIRECT
design strength value

Ph: 027 2937193
Fax: (09) 6290900
Email: info@showcasesdirect.co.nz
www.showcasesdirect.co.nz



SHOWCASESDIRECT
design strength value

Ph: 027 2937193
Fax: (09) 6290900
Email: info@showcasesdirect.co.nz
www.showcasesdirect.co.nz

Photo 4

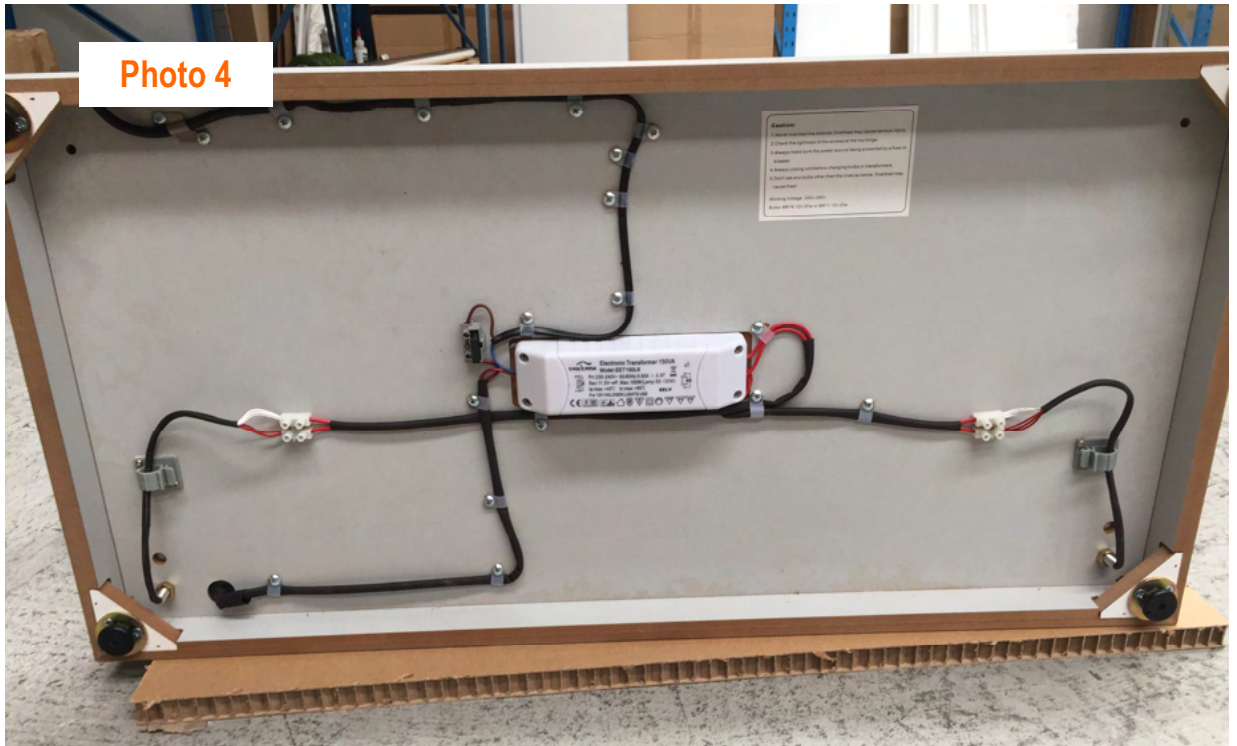
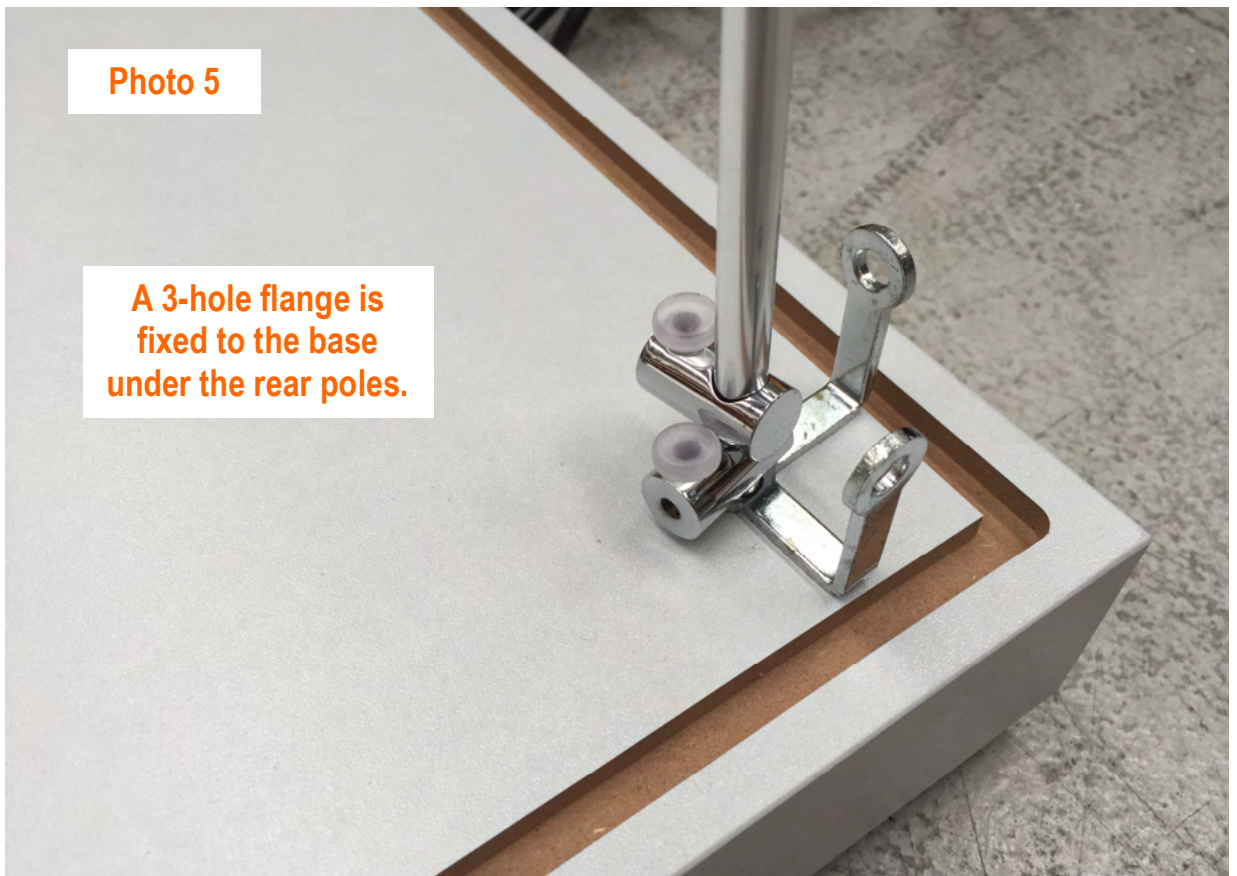


Photo 5

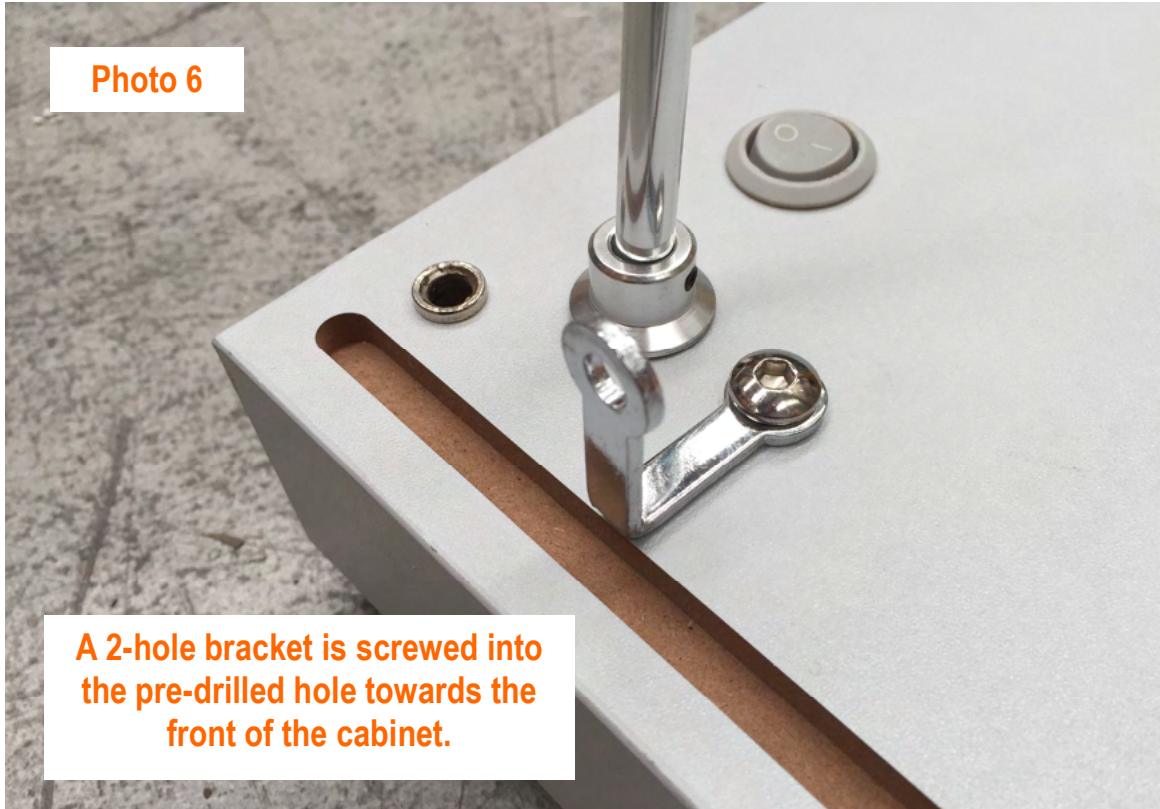
A 3-hole flange is fixed to the base under the rear poles.



SHOWCASESDIRECT
design strength value

Ph: 027 2937193
Fax: (09) 6290900
Email: info@showcasesdirect.co.nz
www.showcasesdirect.co.nz

Photo 6



A 2-hole bracket is screwed into the pre-drilled hole towards the front of the cabinet.

Photo 7



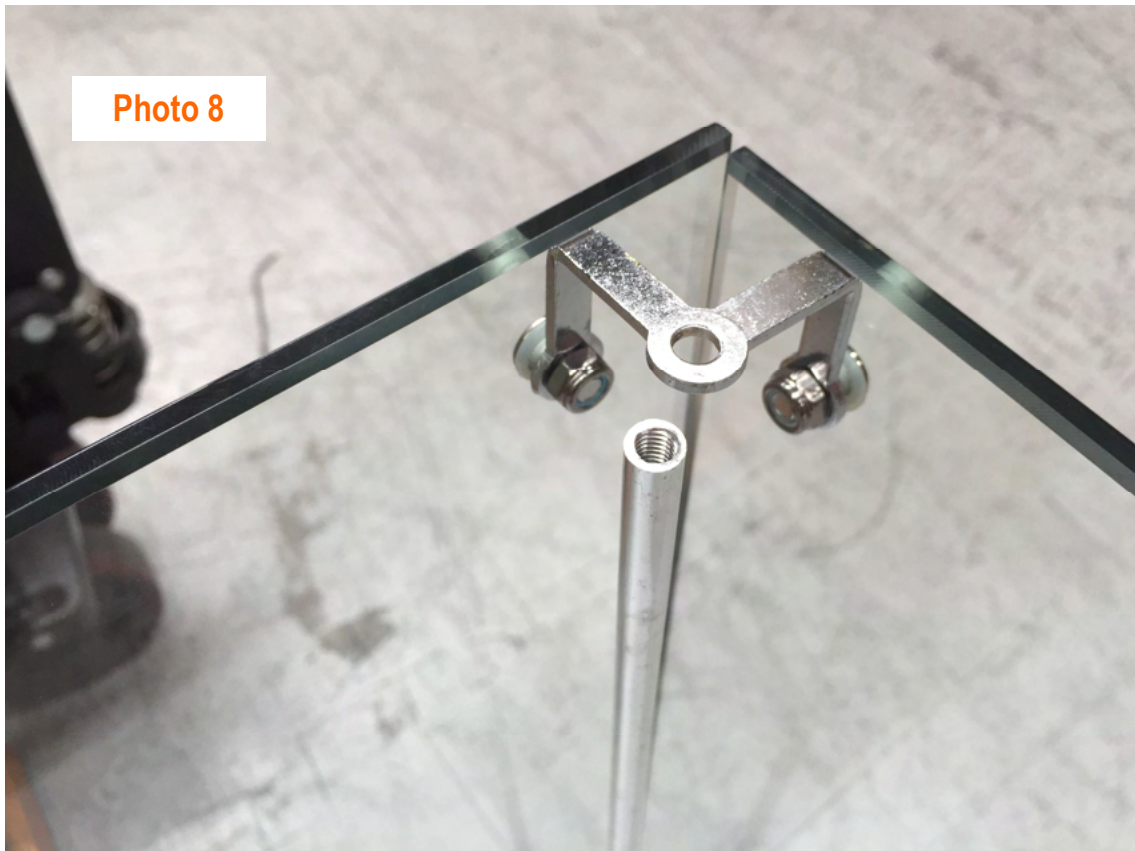
If not pre-installed, screw the door stoppers in place.



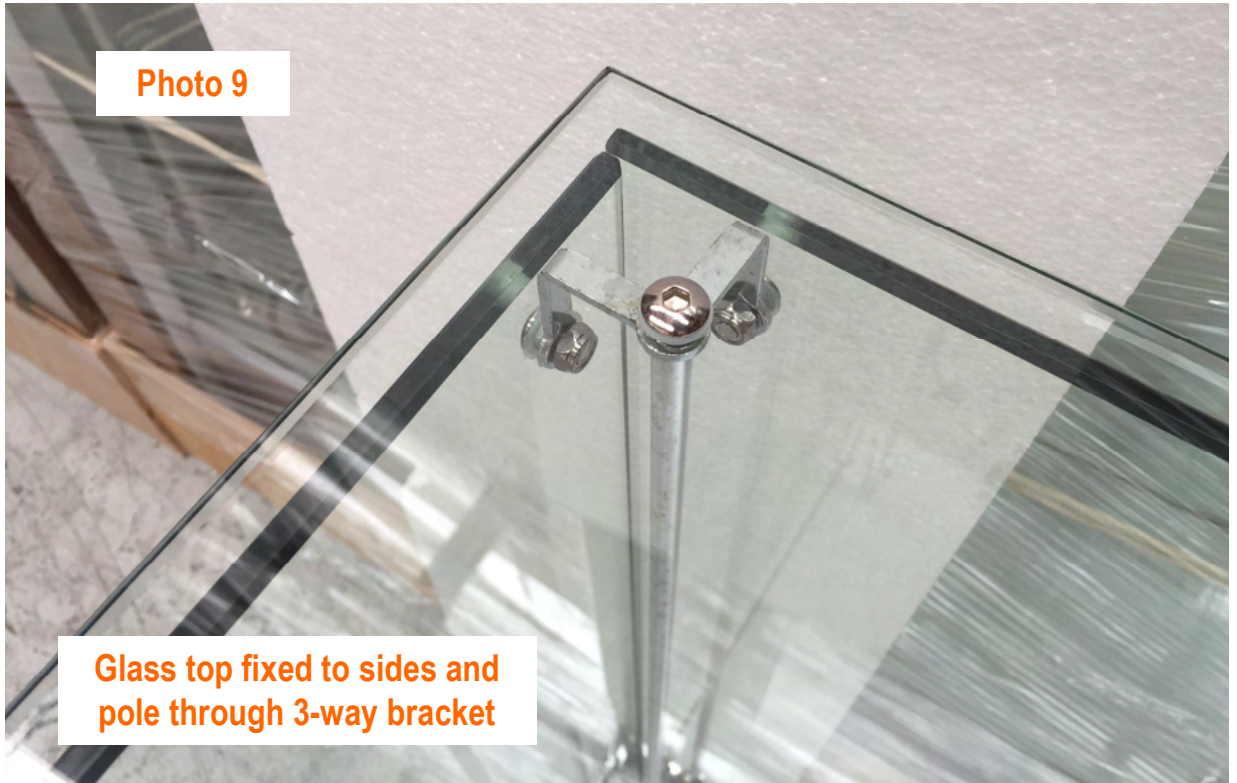
SHOWCASESDIRECT
design strength value

Ph: 027 2937193
Fax: (09) 6290900
Email: info@showcasesdirect.co.nz
www.showcasesdirect.co.nz

8. After all four poles have been secured in place, place the cabinet upright. If you haven't already done so, the shelf supports and flanges can be threaded on to the rear poles (the ones with no light fittings). The flanges are designed to cover the hole that the poles go through. The shelf supports are placed on to the pole with the rubber pad facing upwards. Each pole will have one flange (which goes on first), followed by two shelf supports.
NOTE: The poles with light fittings on them already have their shelf supports pre-threaded (in-between the light fittings). You should have already threaded the bottom flange on (before poking the wires through the base).
9. Take the back glass panel (the largest of the glass panels), and place it in the appropriate slot on the base board. There is a right and wrong side up. You can tell which end goes in the base by the holes on this side being slightly further from the edge than the holes on the other end. This extra distance is to accommodate the groove in the base the panel sits in. If the panel is upside down, the holes will not quite line up with the holes in the brackets.
10. Place one of the side panels into its slot on the base board, at right angles to the back panel. Fasten the two panels together at the top corner using a three-way bracket and two nuts/bolts (see Photo 8). Repeat this process with the second side panel. Fix them together at the base using brackets you have already installed.



11. Once the poles, the sides and the shelf supports have been put in place, the top can be fixed in place. In the rear corners, the top is fixed by a screw that goes through the 3-way bracket and into the rear pole. See Photo 9. At the front corners, the same principle is used but the 2-way bracket used to hold the top down incorporates the door hinge (see Photo 10).



SHOWCASESDIRECT
design strength value

Ph: 027 2937193
Fax: (09) 6290900
Email: info@showcasesdirect.co.nz
www.showcasesdirect.co.nz

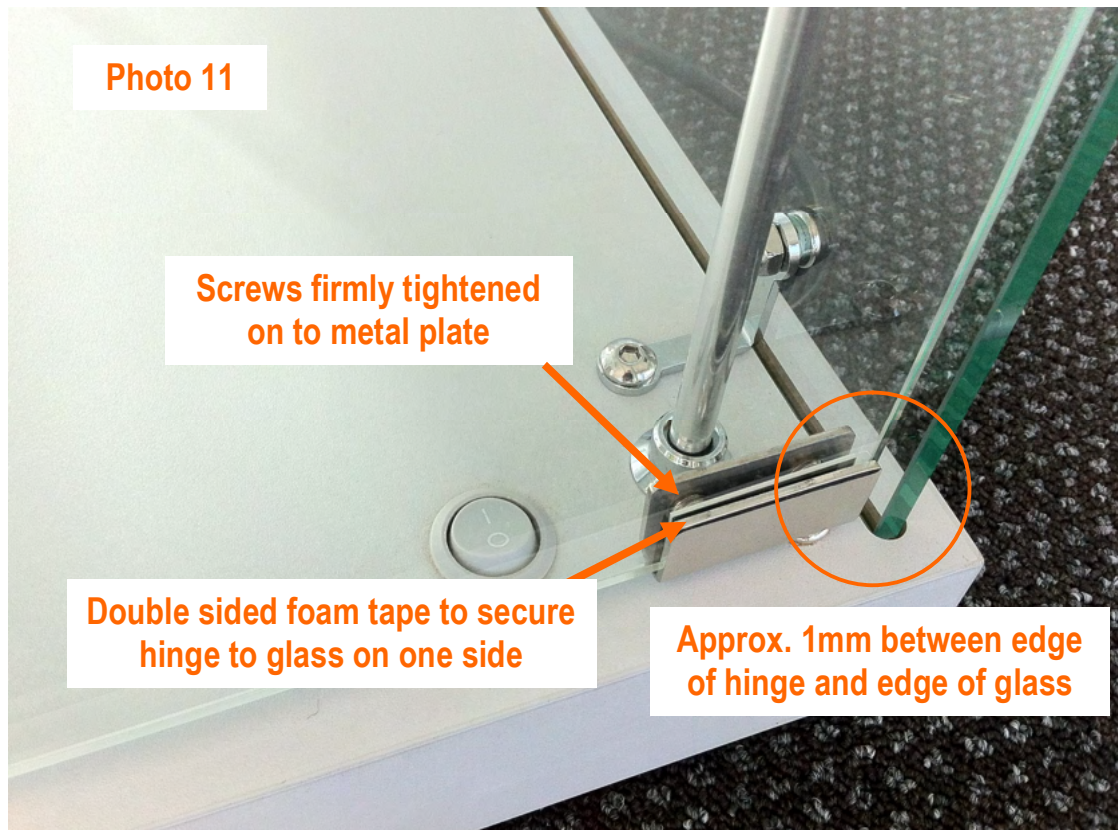
Photo 10



The brackets holding the front poles incorporate a hinge.

12. Fit the doors. The hinges that go at the bottom of the doors are standard clamp hinges, but the hinges at the top of the doors incorporate the top 2-way bracket. For both, the hinges supplied have two screws on one side, and double sided adhesive foam on the other. The screws are designed to face the back of the cabinet once the doors are in place, so they must be fitted in pairs to achieve this effect. Remove the yellow (or white) waxed paper from the adhesive foam which is already in place on the inside of the hinge. Place the hinge on a corner of one of the doors, and allow the adhesive foam to hold it in place. The doors and hinges are designed to have approximately 1mm margin between the edge of the hinge and the edge of the door. See Photo 11. Place one of the supplied pieces of flat metal between the screws on the other side of the hinge and the glass i.e. **DO NOT SCREW DIRECTLY ONTO THE GLASS OR YOU RISK BREAKING IT.** In no circumstances should the screws make contact with the glass. Tighten the screws in tandem until they hold the hinge in place - the screws should be tightened reasonable firmly.
13. Repeat this process for the other hinge, and the other door, ensuring the hinges are placed as pairs with the screws facing the same way.





14. Place the lock in the appropriate position on the door, and tighten with the supplied screwdriver.
15. Put the shelves in place. You can place the shelves at any height, as they are fully adjustable between the light fittings (which are not adjustable). The important thing is to ensure that each of the four shelf supports are at exactly the same height so that the shelf is level and does not rock. This involves measuring the height of shelf support as you position them. Start with the bottom shelf and work your way up. Tighten the shelf supports firmly into place with the small Phillips screw driver supplied – the small screws should be fastened securely onto the pole. Place each shelf into the shelf supports in turn.
16. If it is not pre-fitted, screw the door stoppers into the pre-drilled hole in the base. See Photo 7.
NOTE: The design of the door stoppers may be different to that shown in the photo.



SHOWCASESDIRECT
design strength value

Ph: 027 2937193
Fax: (09) 6290900
Email: info@showcasesdirect.co.nz
www.showcasesdirect.co.nz



SHOWCASESDIRECT
design strength value

Ph: 027 2937193
Fax: (09) 6290900
Email: info@showcasesdirect.co.nz
www.showcasesdirect.co.nz